

THE ECONOMIC BENEFITS OF THE LHC RESEARCH PROGRAMME

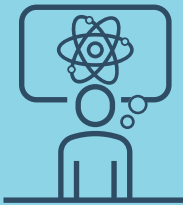
Is it worth investing in large-scale research facilities?



Co-funded by the H2020 Programme of the European Union

WHO BENEFITS?

1



Scientists
(basic research and publications)

2



Students and researchers
(Education, training, competitiveness)

3



Industry
(global network, new Products & Services more efficiency,)

5



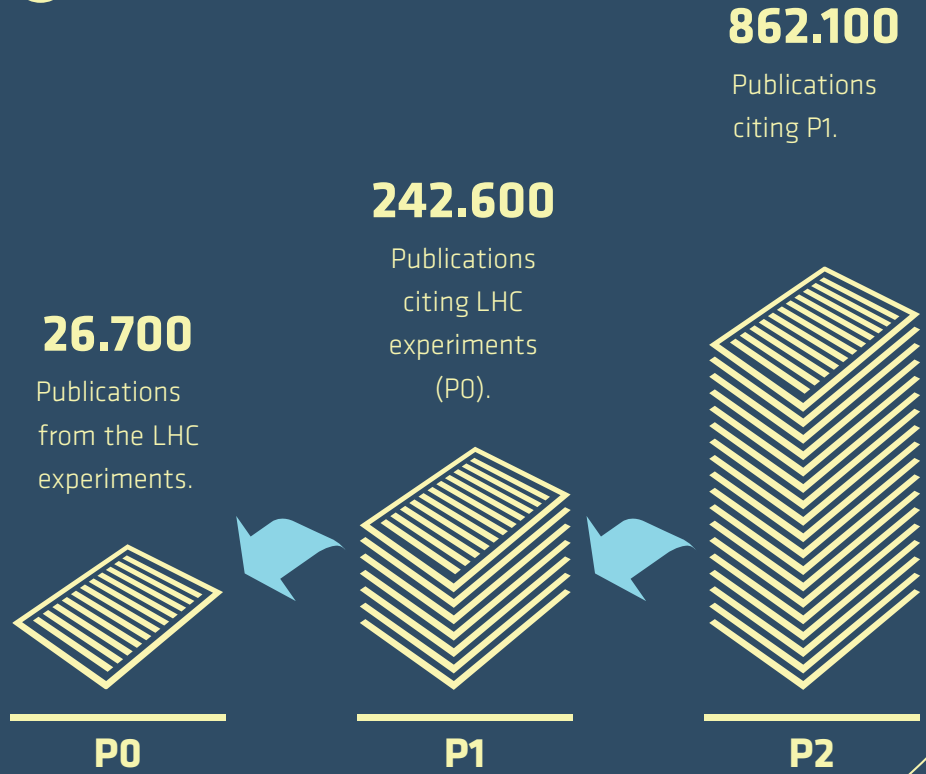
Taxpayers
(Knowledge as public good)

4



General Public
(Culture and Education)

1 SCIENTISTS



2 STUDENTS & RESEARCHERS

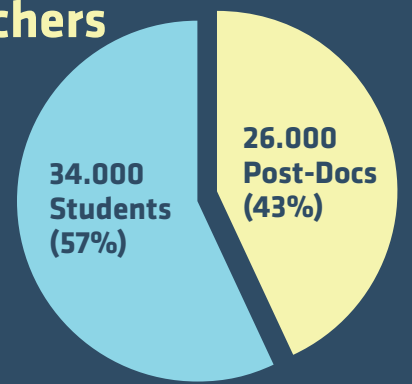
Education that goes beyond solving scientific problems.



€ 150,000 cumulative salary increase per student

Young researchers

(1993-2038)

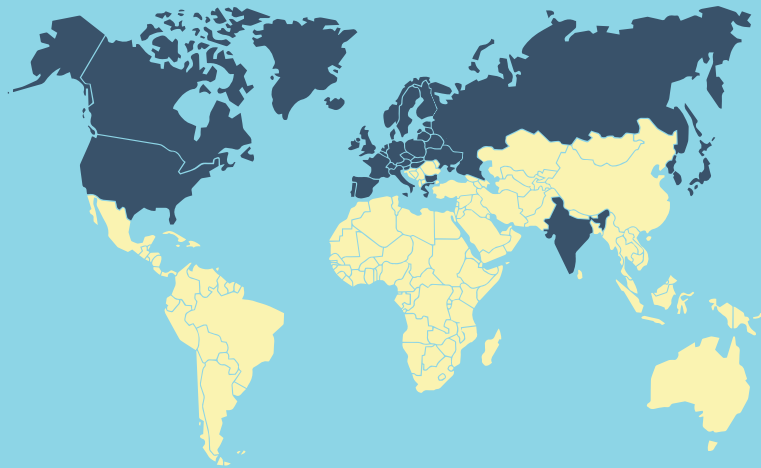


3 INDUSTRIAL PARTNERS

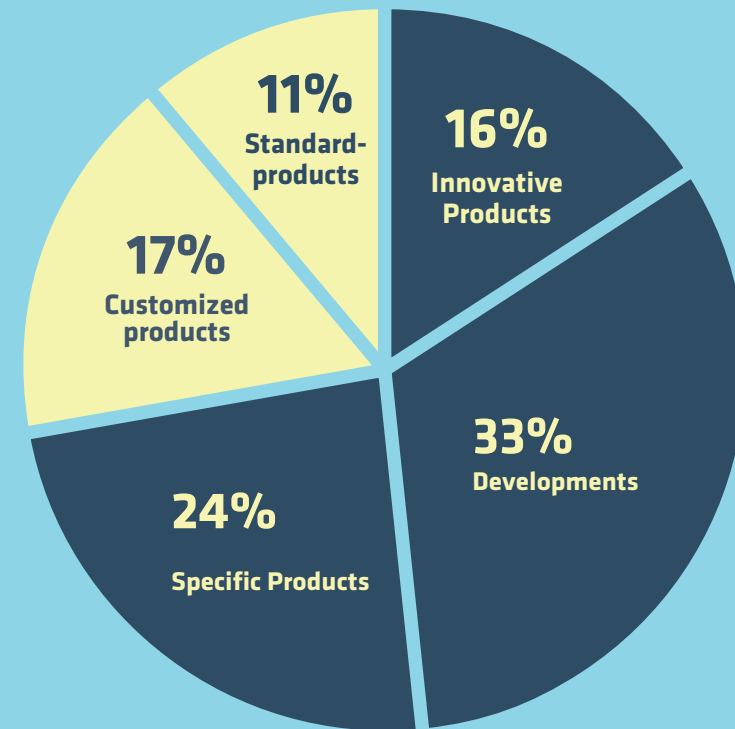
Worldwide participation (1995-2015)

4.204 Companies | 47 Countries |

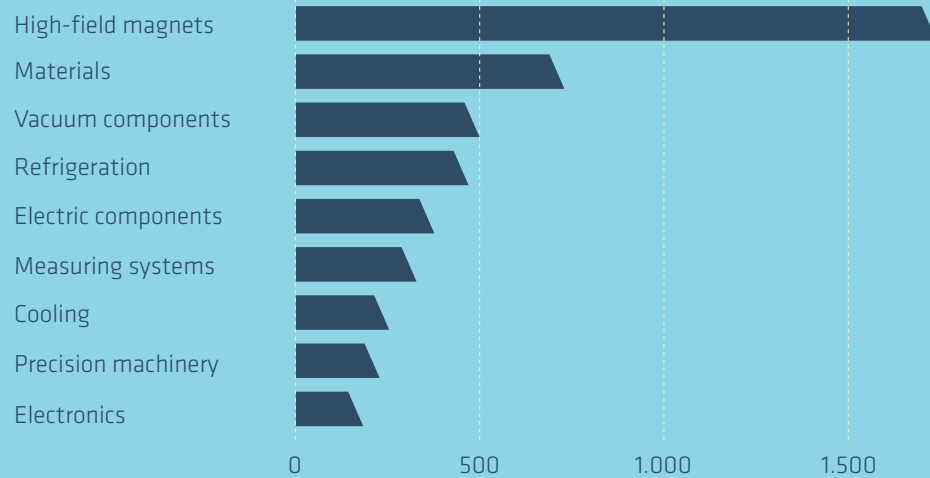
33.414 Contracts



Innovation Orders(1995-2015)



Technology orders as a driver of innovation



4 PUBLIC

Cultural value (1993-2038)



5,1

Million
CERN Visitors



1,6

Million Visitors to
CERN's exhibitions



29,3

Millions of Social Media
Users

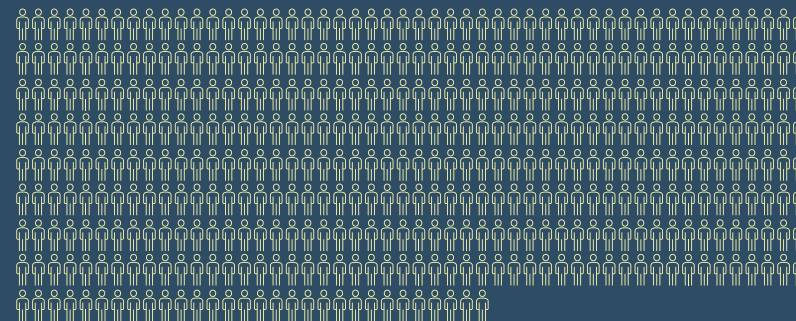


775

Million of visitors
to the sites

5 TAXPAYERS

How much does each one contribute?



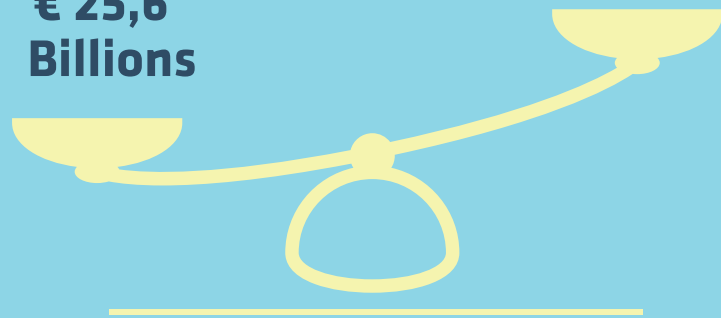
430 Millions of taxpayers
in **22 Member states**
€ 2,50 per Person and per year

INVESTING IN FUNDAMENTAL RESEARCH - SHAPING A BETTER FUTURE

LHC Programme (1993-2038)

**Benefit
€ 25,6
Billions**

**Cost
€ 22,3
Billions**



Economic Impact

The Large Hadron Collider (LHC) research program at CERN generates approximately € 3.3 billion in net present value (investment and operating costs are deducted) for the Society in the period from 1993 to 2038.

In other words, the research infrastructure reimburses its costs with 15% surplus in the form of societal benefits.

The data of this infographic comes from a cost-benefit analysis carried out by the University of Milan and the Center for Industrial Studies in Milan (Italy). The European Union's Investment Projects Guide to Cost Benefit analysis of Investment projects (2014) has been used for the analysis to ensure that a fact-based method is used.

The study is available at the following link: <http://cds.cern.ch/record/2319300>